

**Your patient
has been diagnosed
with Oral Pre-Cancer (OPMD).**

WHAT DO YOU TELL THEM?

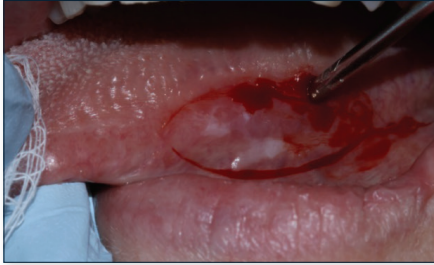


STRATICYTE

Predicting the Risk of
Developing Oral Cancer

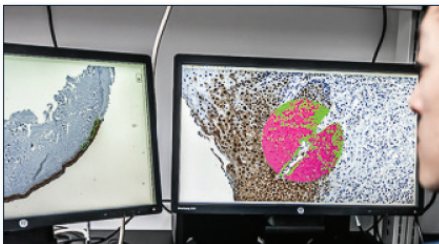
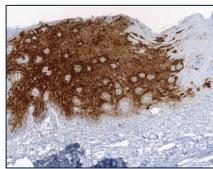
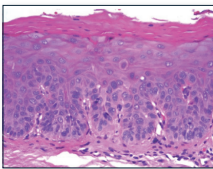
PROTEOCYTE AI CAN HELP!

Your patient has unfortunately been diagnosed with Oral Dysplasia or OPMD (Oral Potentially Malignant Disease).



Currently clinicians use dysplasia grading to manage OPMD patients. Dysplasia grading is a highly subjective test with poor reproducibility, and has limited prognostic value, offering you very confusing guidance.

We can help, at **Proteocyte AI**, by performing a prognostic **STRATICYTE™** test using your patient's original biopsy tissue.



Managing the Elevated-risk Patient.

Using AI-driven digital pathology, S100A7 (a cancer promoting protein) along with cellular features from your patient's original biopsy sample are quantitatively measured.



Your patient's test results are compared with a large cohort of similar cases with many years of follow up, to generate an individualized 5-year cancer risk report specifically for your patient, allowing you to

personalize your patient's management leading to earlier cancer detection.

The STRATICYTE test has a sensitivity of 96% and a NPV of 96%.

STRATICYTE is the leading commercially available prognostic test that helps manage patients diagnosed with Oral Pre-Cancer, Dysplasia or OPMD.

To order the STRATICYTE test for your patient, contact Proteocyte AI at:

1-833-5-PROTEO (1-833-577-6836) or email us at: proteocyte@patientcaresolutions.com

For more information on the STRATICYTE test please visit our website at proteocyte.com

The STRATICYTE test is a proprietary prognostic test offered by **Proteocyte AI**.

Proteocyte AI is a privately held corporation located in the MaRS Centre on Hospital Row in Toronto Canada.



Proteocyte AI
MaRS Centre South Tower
101 College St. Suite 200
Toronto, Canada
M5G 1L7

STRATICYTE

Predicting the Risk of
Developing Oral Cancer